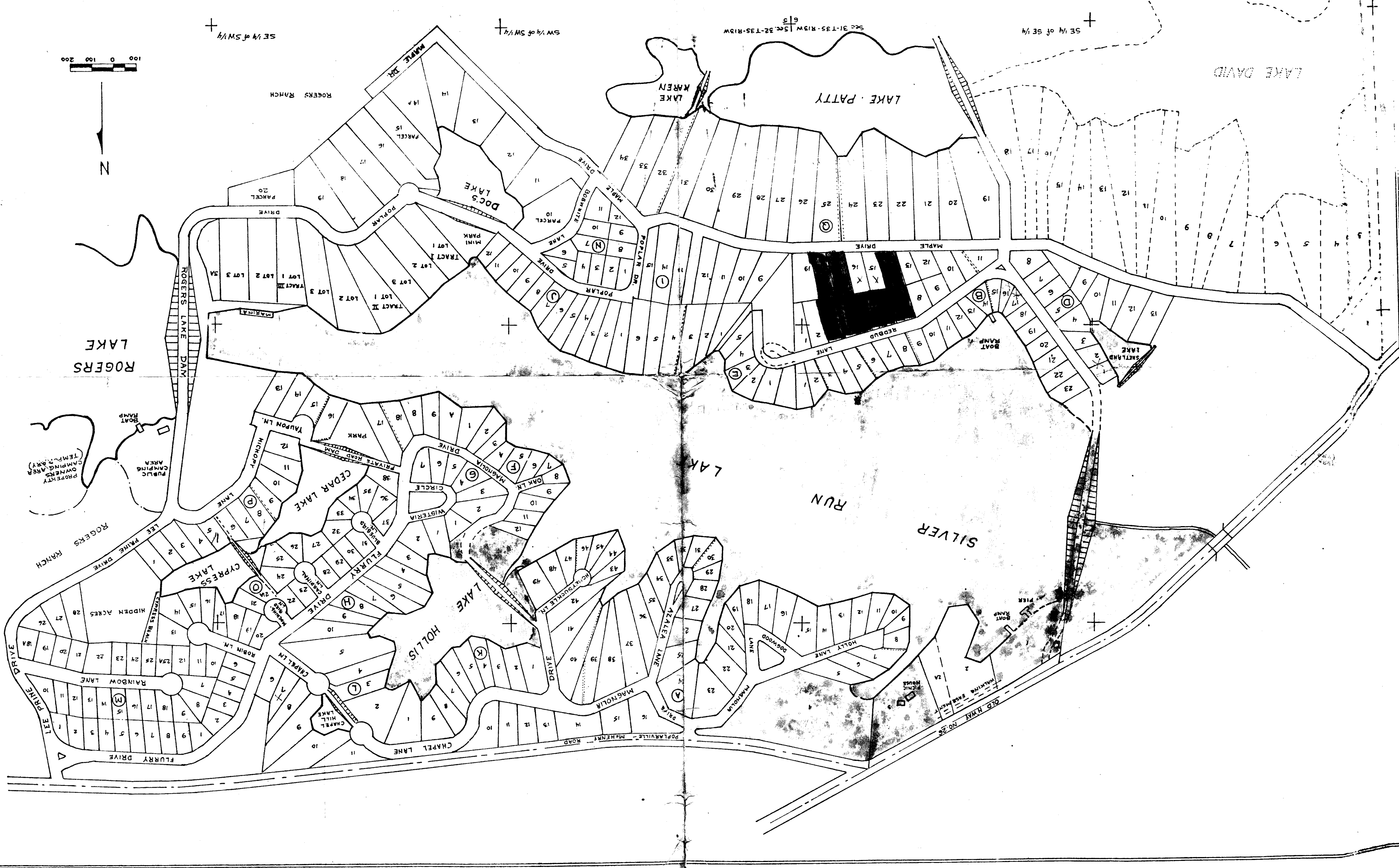
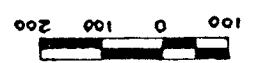


SILVER RUN LAKES
SILVER RUN LAND-O-LAKES
SUBDIVISIONS



SW 1/4 of SW 1/4
SE 1/4 of SE 1/4

ROGERS RANCH
PUBLIC CAMPING AREA
BOAT RAMP
PROPERTY OWNERS
(TEMPORARY)

OLD HWY. NO. 26
WALKING BRIDGE